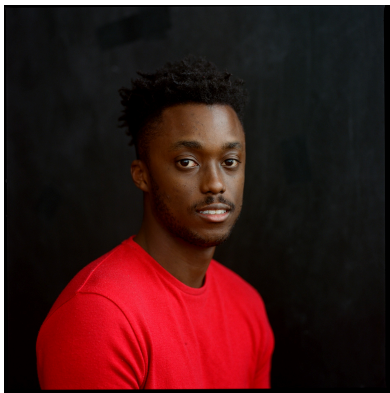


THIS HOUSE IS NOT A HOME

A frenzied rant of online logic delivered outside an inflatable mausoleum, Nile Harris' *this house is not a home* surrounds a bounce castle purchased by Harris' friend, interdisciplinary artist and filmmaker Trevor Bazile (born Miami, FL, 1996-2021). Over the course of the performance, the castle comes to represent an ephemeral monument, a besieged U.S. capital, and a simulacrum of hollow liberal care. *this house is not a home* extends from Harris and Bazile's collaboratively created, live-Google-document-based 'you niggas in trouble' manifesto (2020), a metaphorical board meeting that asked: will the revolution have 501c3 status? In and around the sound-responsive plastic shrine, *this house is not a home* situates this question within the detritus of the past two years—in bitter inheritance, fugitive avatars, political theater, Tucker Carlson redacted texts, and the cleansing of money through arts philanthropy. Figures—a gingerbread minstrel, Dimes Square vape addicts, a beloved children's movie cowboy—appear, haunted by the fraught question: what does it mean to be an American? Enlivened by collaborators Crackhead Barney and Malcolm-x Betts, and featuring sonic composition by slowdanger and GENG PTP, *this house is not a home* uses clowning and live-mixed sound scoring to enact a memorial in an "Incellectual" spew of discourse.



NILE HARRIS is a performer and director of live art. He has done a few things and hopes to do a few more, God willing.

PHILIP BITHER has served as Walker Art Center's Director and Senior Curator of Performing Arts since April 1997, spearheading one of the country's leading contemporary performing arts programs. During this time, he has overseen the building of the William and Nadine McGuire Theater, an acclaimed theatrical space and production laboratory within the Walker expansion designed by Herzog & deMeuron (opened in 2005), the raising of the Walker's first dedicated performing arts endowment, the commissioning of more than 200 new works in dance, music and performance, and the annual residency and presentation support of dozens of contemporary performing arts creators, established and emerging. Prior to this, he served as Artistic Director for the Flynn Center and its Discover Jazz Festival in Burlington, VT (1988-1996); and he served as Associate Director and Music Curator for BAM's Next Wave Festival (1983-1988). He regularly sits on national foundation and governmental arts panels, advises foundations and organizations nationally, actively travels globally to research new performance and to speak and write about trends in the contemporary performing arts. From 2009-2019, he served on the Board of Trustees of the Jerome Foundation, including two years as Vice-Chair and one as Chairman. In recognition of his contributions to the arts, Bither was bestowed with the honor of Chevalier (Knight) de L'Ordre des Arts et des Lettres by the French Government in 2023.



LEARN MORE ABOUT THIS PROJECT:

DOSSIER:  [this house is not a home dossier](#)

VIDEO: [this house is not a home](#)

CONTACT: Nile Harris

nileharris@gmail.com